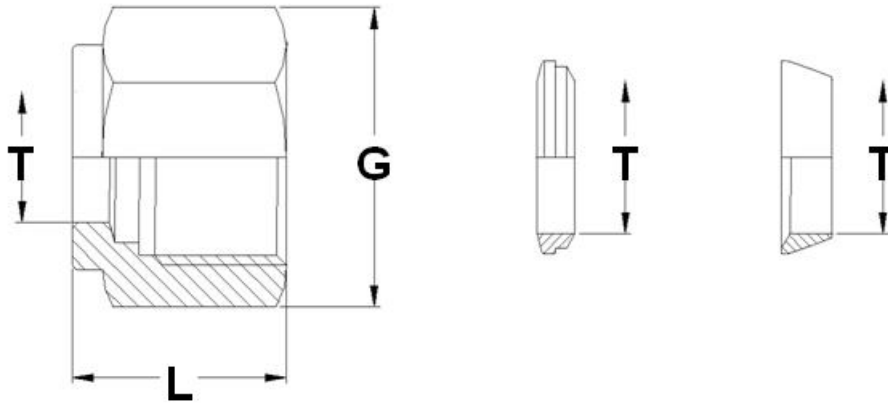


NUT AND FERRULE



INCH OD Tubes

TUBE OD - T	L	G	PART NO.		
inch	mm	mm	NUT	FRONT FERRULE	BACK FERRULE
1/8	12	11	2D-N	2D-FF	18I-FB
1/4	12.7	14	4D-N	4D-FF	14I-FB
5/16	13.5	16	5D-N	5D-FF	56I-FB
3/8	14.5	17	6D-N	6D-FF	38I-FB
1/2	17.5	22	8D-N	8D-FF	12I-FB
5/8	17.5	25	10D-N	10D-FF	58I-FB
3/4	17.5	30	12D-N	12D-FF	34I-FB
7/8	17.5	32	14D-N	14D-FF	78I-FB
1	20.6	38	16D-N	16D-FF	11I-FB

METRIC OD Tubes

TUBE OD - T	L	G	PART NO.		
mm	mm	mm	NUT	FRONT FERRULE	BACK FERRULE
3	12	11	D-N3	D-FF3	3D-FB
6	12.7	14	D-N6	D-FF6	6D-FB
8	13.5	16	D-N8	D-FF8	8D-FB
10	15.1	19	D-N10	D-FF10	10D-FB
12	17.5	22	D-N12	D-FF12	12D-FB
14	17.5	25	D-N14	D-FF14	14D-FB
15	17.5	25	D-N15	D-FF15	15D-FB
16	17.5	25	D-N16	D-FF16	16D-FB
18	17.5	30	D-N18	D-FF18	18D-FB
20	17.5	32	D-N20	D-FF20	20D-FB
22	17.5	32	D-N22	D-FF22	22D-FB
25	20.6	38	D-N25	D-FF25	25D-FB