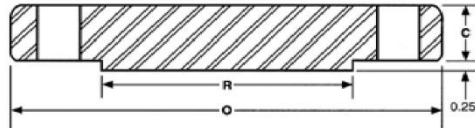


ANSI B16.5 Class 900 Blind Flanges



Nominal Size	Outside Diameter O	Thickness C	Dia Of Raised Face R	No. Of Holes	Dia. Of Holes	Dia. Of Bolts	Bolt Circle Diameter	Approx. Weight (Lbs)
1/2"	4.75	0.88	1.38	4	0.88	0.75	3.25	4
3/4"	5.12	1.00	1.69	4	0.88	0.75	3.50	6
1"	5.88	1.13	2.00	4	1.00	0.88	4.00	8
1 1/4"	6.25	1.13	2.50	4	1.00	0.88	4.38	9
1 1/2"	7.00	1.25	2.88	4	1.12	1.00	4.88	13
2"	8.50	1.50	3.63	8	1.00	0.88	6.50	25
2 1/2"	9.62	1.63	4.13	8	1.12	1.00	7.50	35
3"	9.50	1.50	5.00	8	1.00	0.88	7.50	29
4"	11.50	1.75	6.19	8	1.25	1.13	9.25	54
5"	13.75	2.00	7.31	8	1.38	1.25	11.00	87
6"	15.00	2.19	8.50	12	1.25	1.13	12.50	115
8"	18.50	2.50	10.63	12	1.50	1.38	15.50	200
10"	21.50	2.75	12.75	16	1.50	1.38	18.50	290
12"	24.00	3.13	15.00	20	1.50	1.38	21.00	415
14"	25.25	3.38	16.25	20	1.62	1.50	22.00	520
16"	27.75	3.50	18.50	20	1.75	1.63	24.25	600
18"	31.00	4.00	21.00	20	2.00	1.88	27.00	850
20"	33.75	4.25	23.00	20	2.12	2.00	29.50	1075
24"	41.00	5.50	27.25	20	2.62	2.50	35.50	2025

TECH TUBES & FITTINGS

Phone: +91-22-6743 6862 ; Email: sales@techtubes.in ; Web:

www.techtubes.in

Information in this catalog was compiled from industry sources that Tech Tubes & Fitting believes to be reliable.

We, however, do not guarantee the accuracy of this data.

ALL DIMENSIONS IN INCHES