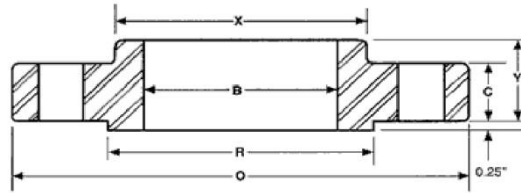


ANSI B16.5 Class 600 Slip-On Flanges



Nominal Size	Outside Diameter O	Thickness C	Dia Of Raised Face R	Dia. Of Hub At Base X	Length Thru Hub Y	Inside Diameter B	No. Of Holes	Dia. of holes	Dia. Of Bolts	Dia. Of Bolt Circle	Approx. Weight (Lbs)
1/2"	3.75	0.56	1.38	1.50	0.88	0.88	4	0.62	1/2	2.62	2
3/4"	4.62	0.62	1.69	1.88	1.00	1.09	4	0.75	5/8	3.25	3
1"	4.88	0.69	2.00	2.12	1.06	1.36	4	0.75	5/8	3.50	4
1 1/4"	5.25	0.81	2.50	2.50	1.12	1.70	4	0.75	5/8	3.88	5
1 1/2"	6.12	0.88	2.88	2.75	1.25	1.95	4	0.88	3/4	4.50	7
2"	6.50	1.00	3.62	3.31	1.44	2.44	8	0.75	5/8	5.00	9
2 1/2"	7.50	1.12	4.12	3.94	1.62	2.94	8	0.88	3/4	5.88	13
3"	8.25	1.25	5.00	4.62	1.81	3.57	8	0.88	3/4	6.62	16
3 1/2"	9.00	1.38	5.50	5.25	1.94	4.07	8	1.00	7/8	7.25	21
4"	10.75	1.50	6.19	6.00	2.12	4.57	8	1.00	7/8	8.50	37
5"	13.00	1.75	7.31	7.44	2.38	5.66	8	1.12	1	10.50	63
6"	14.00	1.88	8.50	8.75	2.62	6.72	12	1.12	1	11.50	80
8"	16.50	2.19	10.62	10.75	3.00	8.72	12	1.25	1 1/8	13.75	115
10"	20.00	2.50	12.75	13.50	3.38	10.88	16	1.38	1 1/4	17.00	170
12"	22.00	2.62	15.00	15.75	3.62	12.88	20	1.38	1 1/4	19.25	200
14"	23.75	2.75	16.25	17.00	3.69	14.14	20	1.50	1 3/8	20.75	230
16"	27.00	3.00	18.50	19.50	4.19	16.16	20	1.62	1 1/2	23.75	330
18"	29.25	3.25	21.00	21.50	4.62	18.18	20	1.75	1 5/8	25.75	400
20"	32.00	3.50	23.00	24.00	5.00	20.20	24	1.75	1 5/8	28.50	510
24"	37.00	4.00	27.25	28.25	5.50	24.25	24	2.00	1 7/8	33.00	730

TECH TUBES & FITTINGS

Phone: +91-22-6743 6862 ; Email: sales@techtubes.in ; Web: www.techtubes.in

Information in this catalog was compiled from industry sources that Tech Tubes & Fitting believes to be reliable.
We, however, do not guarantee the accuracy of this data.

ALL DIMENSIONS IN INCHES