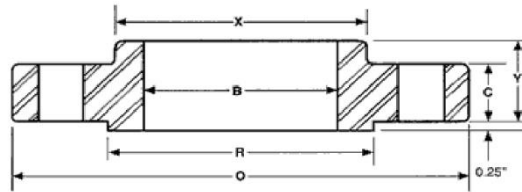


ANSI B16.5 Class 1500 Slip-On Flanges



Nominal Size	Outside Diameter O	Thickness C	Dia Of Raised Face R	Dia. Of Hub At Base X	Length Thru Hub Y	Inside Diameter B	No. Of Holes	Dia. of holes	Dia. Of Bolts	Dia. Of Bolt Circle	Approx. Weight (Lbs)
1/2"	4.75	0.88	1.38	1.50	1.25	0.88	4	0.88	3/4	3.25	4
3/4"	5.12	1.00	1.69	1.75	1.38	1.09	4	0.88	3/4	3.50	5
1"	5.88	1.12	2.00	2.06	1.62	1.36	4	1.00	7/8	4.00	8
1 1/4"	6.25	1.12	2.50	2.50	1.62	1.70	4	1.00	7/8	4.38	9
1 1/2"	7.00	1.25	2.88	2.75	1.75	1.95	4	1.12	1	4.88	12
2"	8.50	1.50	3.62	4.12	2.25	2.44	8	1.00	7/8	6.50	25
2 1/2"	9.62	1.62	4.12	4.88	2.50	2.94	8	1.12	1	7.50	36
3"	10.50	1.88	5.00	5.25	2.88	3.57	8	1.25	1 1/8	8.00	48
4"	12.25	2.12	6.19	6.38	3.56	4.57	8	1.38	1 1/4	9.50	73
5"	14.75	2.88	7.31	7.75	4.12	5.66	8	1.62	1 1/2	11.50	130
6"	15.50	3.25	8.50	9.00	4.69	6.72	12	1.50	1 3/8	12.50	165
8"	19.00	3.62	10.62	11.50	5.62	8.72	12	1.75	1 5/8	15.50	260
10"	23.00	4.25	12.75	14.50	6.25	10.88	12	2.00	1 7/8	19.00	435
12"	26.50	4.88	15.00	17.75	7.12	12.88	16	2.12	2	22.50	580
14"	29.50	5.25	16.25	19.50			16	2.38	2 1/4	25.00	
16"	32.50	5.75	18.50	21.75			16	2.62	2 1/2	27.75	
18"	36.00	6.38	21.00	23.50			16	2.88	2 3/4	30.50	
20"	38.75	7.00	23.00	25.25			16	3.12	3	32.75	
24"	46.00	8.00	27.25	30.00			16	3.62	3 1/2	39.00	

TECH TUBES & FITTINGS

Phone: +91-22-6743 6862 ; Email: sales@techtubes.in ; Web: www.techtubes.in

Information in this catalog was compiled from industry sources that Tech Tubes & Fitting believes to be reliable.

We, however, do not guarantee the accuracy of this data.

ALL DIMENSIONS IN INCHES