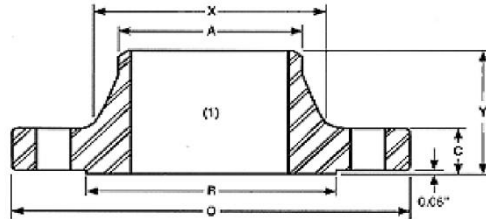


ANSI B16.5 Class 150 Weld-Neck Flanges



Nominal Size	Outside Diameter O	Thickness C	Dia Of Raised Face R	Dia. Of Hub At Base X	Dia. Of Hub at welding Point A	Length Thru Hub Y	No. Of Holes	Dia. of holes	Dia. Of Bolts	Dia. Of Bolt Circle	Approx. Weight (Lbs)
1/2"	3.50	0.44	1.38	1.19	0.84	1.88	4	0.62	1/2	2.38	2
3/4"	3.88	0.50	1.69	1.50	1.05	2.06	4	0.62	1/2	2.75	2
1"	4.25	0.56	2.00	1.94	1.32	2.19	4	0.62	1/2	3.12	3
1 1/4"	4.62	0.62	2.50	2.31	1.66	2.25	4	0.62	1/2	3.50	3
1 1/2"	5.00	0.69	2.88	2.56	1.90	2.44	4	0.62	1/2	3.88	4
2"	6.00	0.75	3.62	3.06	2.38	2.50	4	0.75	5/8	4.75	6
2 1/2"	7.00	0.88	4.12	3.56	2.88	2.75	4	0.75	5/8	5.50	8
3"	7.50	0.94	5.00	4.25	3.50	2.75	4	0.75	5/8	6.00	10
3 1/2"	8.50	0.94	5.50	4.81	4.00	2.81	8	0.75	5/8	7.00	12
4"	9.00	0.94	6.19	5.31	4.50	3.00	8	0.75	5/8	7.50	15
5"	10.00	0.94	7.31	6.44	5.56	3.50	8	0.88	3/4	8.50	19
6"	11.00	1.00	8.50	7.56	6.63	3.50	8	0.88	3/4	9.50	24
8"	13.50	1.12	10.62	9.69	8.63	4.00	8	0.88	3/4	11.75	39
10"	16.00	1.19	12.75	12.00	10.75	4.00	12	1.00	7/8	14.25	52
12"	19.00	1.25	15.00	14.38	12.75	4.50	12	1.00	7/8	17.00	80
14"	21.00	1.38	16.25	15.75	14.00	5.00	12	1.12	1	18.75	110
16"	23.50	1.44	18.50	18.00	16.00	5.00	16	1.12	1	21.25	140
18"	25.00	1.56	21.00	19.88	18.00	5.50	16	1.25	1 1/8	22.75	150
20"	27.50	1.69	23.00	22.00	20.00	5.69	20	1.25	1 1/8	25.00	180
24"	32.00	1.88	27.25	26.12	24.00	6.00	20	1.38	1 1/4	29.50	260

TECH TUBES & FITTINGS

Phone: +91-22-6743 6862 ; Email: sales@techtubes.in ; Web: www.techtubes.in

Information in this catalog was compiled from industry sources that Tech Tubes & Fitting believes to be reliable.

We, however, do not guarantee the accuracy of this data.

ALL DIMENSIONS IN INCHES